

FLF-H REMOTE INDICATION LAMP



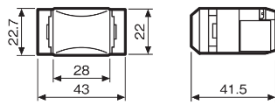
FLF-MP



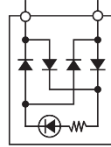
FLF-HP

DIMENSION

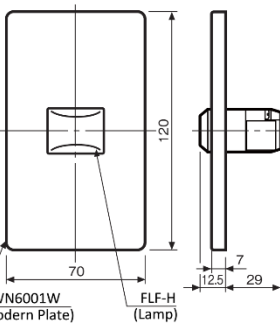
Remote Indication Lamp (FLF-H)



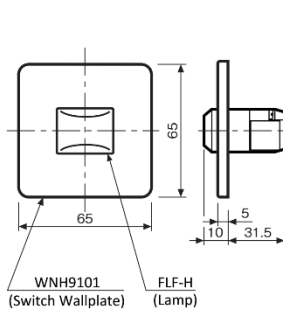
Internal Circuit (FLF-H)



FLF-MP

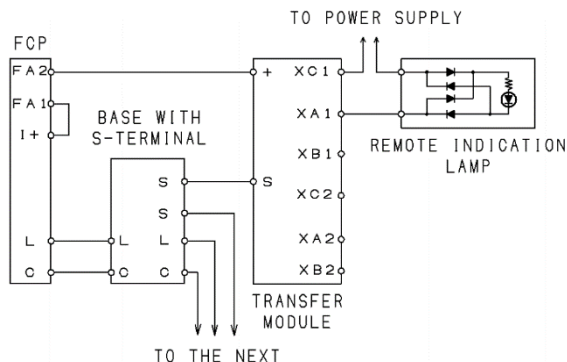


FLF-HP



Unit: mm

DIAGRAM



SPECIFICATIONS

Type	Remote Indication Lamp
Model	FLF-H, FLF-MP, FLF-HP
Operating Voltage	8mA @24Vdc
Operating Temp. Range	-10°C to 40°C
External Wire Resistance	50 Ω or less
Material Body	Self-Extinguishing Resin
Lamp	Self-Extinguishing Resin
Plate (FLF-MP)	ABS Resin (WN6001W) Metal Fitting (WN3700020)
Plate (FLF-HP)	ABS Resin (WNH9101) Metal Fitting (WNH3901)
Color Body	White Ivory
Lamp	Milky White Opal
Plate	Milky White
Weight FLF-H	Approx. 26g
FLF-MP	Approx. 75g
FLF-HP	Approx. 55g
Country of Origin	Japan

※FLF-MP, FLF-HP are set items.

(Main body + Plate + Metal fitting)

- FLF-MP: Lamp FLF-H
Plate WN6001W (ABS Resin)
Metal Fitting WN3700020
- FLF-HP: Lamp FLF-H
Plate WNH9101 (ABS Resin)
Metal Fitting WNH3901

※Compatible plate to use with FLF-H is available at electrical market.