

PPE MANUAL CALL POINT



PPE-1 (JE)

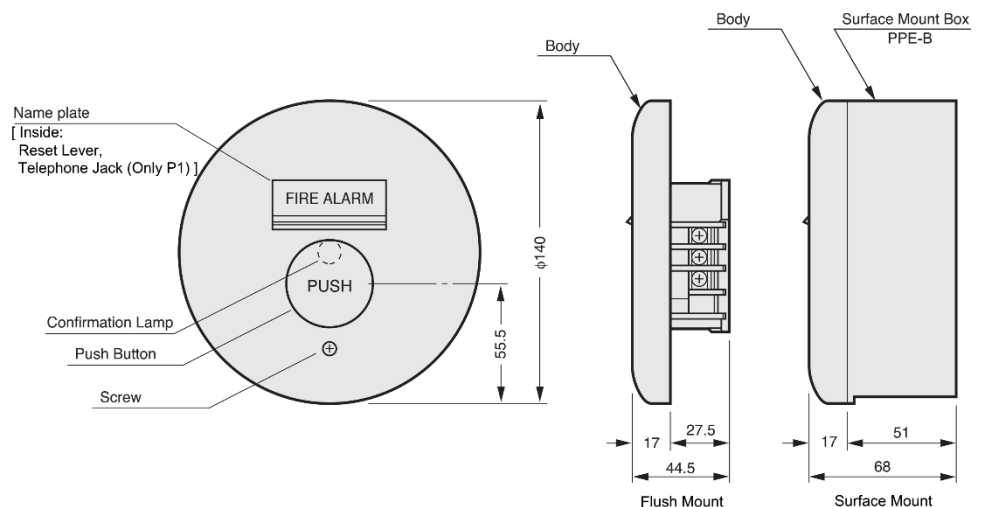
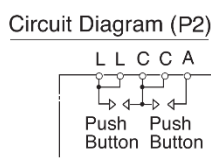
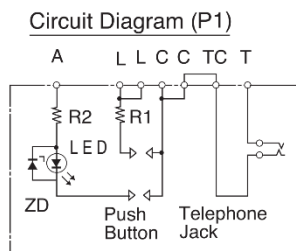


PPE-2 (JE)

SPECIFICATIONS

Type	P-1 Call Point	P-2 Call Point	P-1 Call Point Dew drop Outdoor use	P-1 Call Point	P-2 Call Point	P-1 Call Point Dew drop Outdoor use
Flush / Surface	Flush Mount			Surface Mount		
Model Name	PPE-1 (JE)	PPE-2 (JE)	PPE-1UW-E	PPE-1 (JE) PPE-B	PPE-2 (JE) PPE-B	PPE-1RW-E
Operating Voltage	200mA @24VDC					
Operating Temp. Range	-10°C to 50°C		-20°C to 70°C	-10°C to 50°C		-20°C to 70°C
Material	Self-Extinguishing Plastic					
Color	Red					
Weight	Approx. 180g	Approx. 160g	Approx. 180g	Approx. 320g	Approx. 300g	Approx. 350g
Applicable Box	Medium size square outlet box : JIS C 8336					
Applicable Cover	Medium size square Cover with round hole : JIS C 8336-5					
Country Of Origin	Japan					

DIMENSION



Unit: mm

Specifications subject to change without notice

HOCHIKI ASIA PACIFIC PTE. LTD.

71 UBI Road 1 #07-40/41

Oxley Bizhub Singapore 408732

TEL : 65-6841-9728 FAX : 65-6841-9781

URL : www.hochikisingapore.com

HEAD OFFICE

10-43 Kamiosaki 2-Chome. Shinagawa-Ku,
Tokyo 141-8660 Japan

TEL : 81-(3)-3444-4116 FAX : 81-(3)-3444-4167

URL : www.hochiki.co.jp