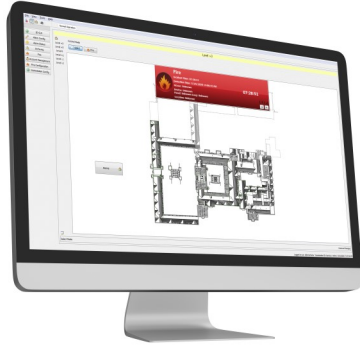


## L@ti-View Graphics Application

PC Workstation Connectivity for Fire Alarm Network



### DESCRIPTION

This professional-grade graphics system will complement the new generation of fire alarm control panels, while also being backward-compatible with the current analog product.

L@ti-View enables the creation of a 2D map of any site or building to monitor fire safety and detection, and automatically switches to an area where a fire device has been activated to allow immediate viewing and investigation of an event. It also displays the relevant emergency assembly and fire control points.

Fully-configurable on-site, L@ti-View supports dual screens allowing a dedicated screen for the 2D graphic map and a separate screen for system management. It also reports any configuration errors, ensuring that the graphics system is maintained and updated whenever the panel configuration is revised.

### STANDARD FEATURES

- L@ti-View works with L@titude, FireNET and FireNET Plus panels.
- Reports configuration mismatch errors – ensuring that the graphics system is properly maintained and updated whenever there are any panel configuration revisions
- Powerful event log filtering and reporting
- Manage the state of the fire system using a combination of graphical images and system controls
- Programmable macro buttons to perform panel control operations
- Full map navigation using configurable buttons or map areas
- Device analog value reporting
- Perform device and zone disablements / enablements
- Operate and restore loop output devices for testing purposes
- Dual screen support for clarity

### HOCHIKI ORDERING CODES

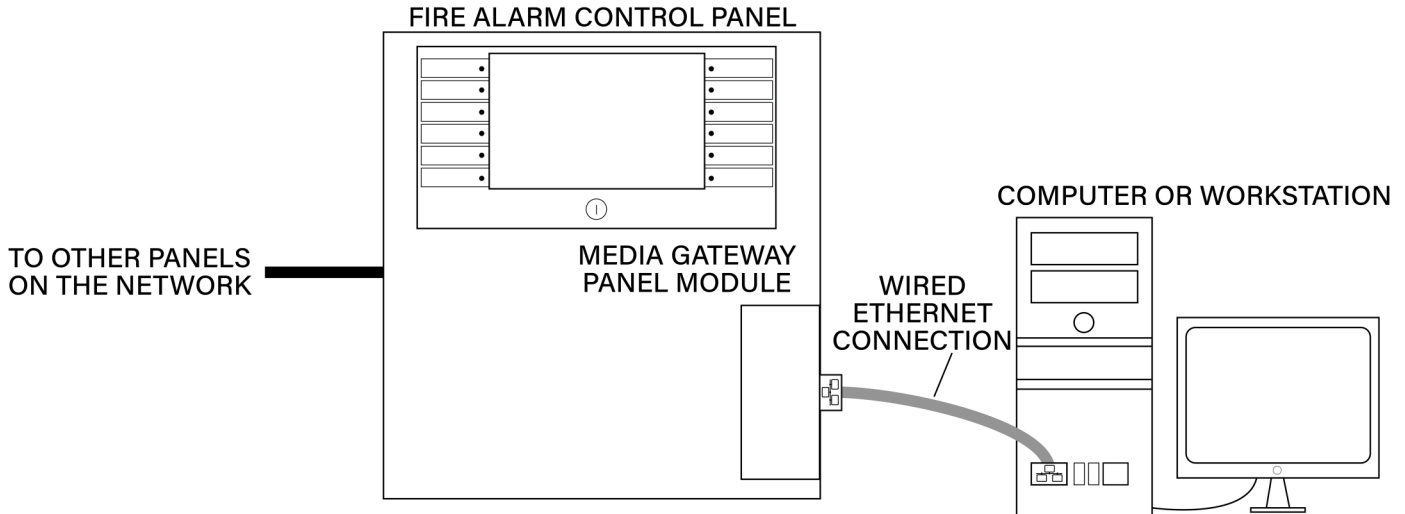
|                   |  |
|-------------------|--|
| <b>0101-02790</b> | L@ti-View - L@titude (UL) based panels - 4 panel license   |
| <b>0101-02800</b> | L@ti-View - L@titude (UL) based panels - 16 panel license  |
| <b>0101-02810</b> | L@ti-View - L@titude (UL) based panels - 127 panel license |
| <b>0101-02820</b> | L@ti-View - FireNET (UL) based panels - 4 panel license    |
| <b>0101-02830</b> | L@ti-View - FireNET (UL) based panels - 16 panel license   |
| <b>0101-02840</b> | L@ti-View - FireNET (UL) based panels - 64 panel license   |

*Specifications subject to change without notice.*

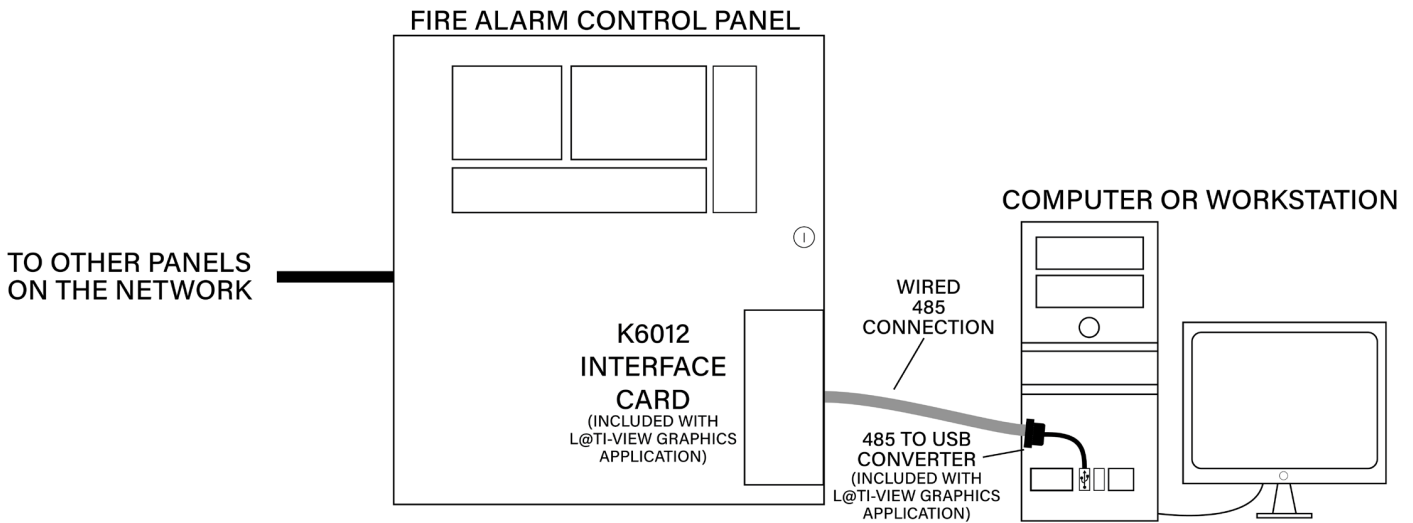
*Continued on back.*

## L@ti-View Graphics Application

### L@TITUDE WIRING DIAGRAM



### FireNET WIRING DIAGRAM



### PC REQUIREMENTS

|                            |   |
|----------------------------|---|
| <b>Processor</b>           | CPU Intel® Core™ i5 64 bit CPU  |
| <b>RAM</b>                 | 16 GB   |
| <b>Hard Drive Size</b>     | 500 MB  |
| <b>Display</b>             | 1280 x 768  |
| <b>Ports</b>               | USB 2.0, and Ethernet (L@titude). An additional USB 2.0 port is required for a FireNET Panel. |
| <b>Operating System</b>    | Windows 10 Pro 64 bit   |
| <b>Internet Connection</b> | Internet connectivity is necessary to perform updates and to take advantage of some features. |